

CVP-270-90-WH

This conversion plate covers 230mm - 264mm hole. Suitable for a maximum cutout size of 90mm, featuring an Inner diameter of 112mm & outer diameter of 230mm.

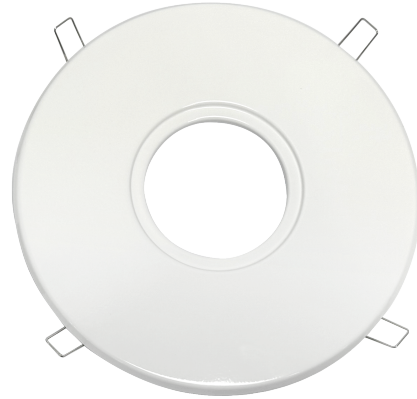
Features & Benefits

- 112mm Inner Diameter
- 270mm Outer Diameter
- To suit 90mm cutout

Specifications

SKU	CVP-270-90-WH
Cut out	90 mm

Photometric information available upon request.



Dimensional Drawings

