

# I60 LINKS COLLECTION

SKU: I60-LINKS-COLLECTION



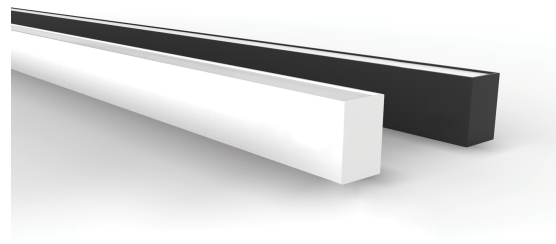
**QUOTE:**  
**PROJECT:**  
**TYPE:**

The Gentech I60 Links collection is designed to fuse art and technology together...a breathtaking and modern lighting solution. The Links I60 is the ultimate in functional, stunning luminaire design brimming with architectural design possibilities. Easily connect the main modules (featuring power adjustable supply) with extender modules and various drivers to produce the length needed, and the desired output. The LED modules simply lock into each other by way of a connector pin. The profiles when joined, lock into each other by means of a 'fast connection plate. Lastly, the end caps are then secured to produce sleek and seamless lighting runs that will enhance any commercial space. Unique light leakage prevention plates stop the light from spilling at the connection points, giving a seamless clean look to the finished design. We welcome a collaboration on your next architectural project.

## Features & Benefits

- Connectable. Fully customisable
- Osram High Power SMD LED
- CRI90+
- MAC Adams 3 Step Standard LED
- Choice of Opal or Micro Prismatic (Low Glare) Diffuser
- Osram Constant Current Power Switchable LED Driver
- Dali 2 Dimmable Option (Available on request)
- Multiple installation accessories
- Multiple corners and curves available to facilitate advanced designs (Available on request. Lead times will apply.)
- The Links I60 is power adjustable with the ability to select the wattage and lumen output.
- No visible screws. No tools needed to install and uninstall
- Made from die cast aluminium
- No light leakage at the joints thanks to unique light leakage prevention plates
- Wago fast connectors assemble in under 10 seconds
- Available in suspended mount, suspended up/down, surface mounted, recessed, recessed with trim (P.O.A) & recessed trimless (P.O.A)

## PRODUCT IMAGE



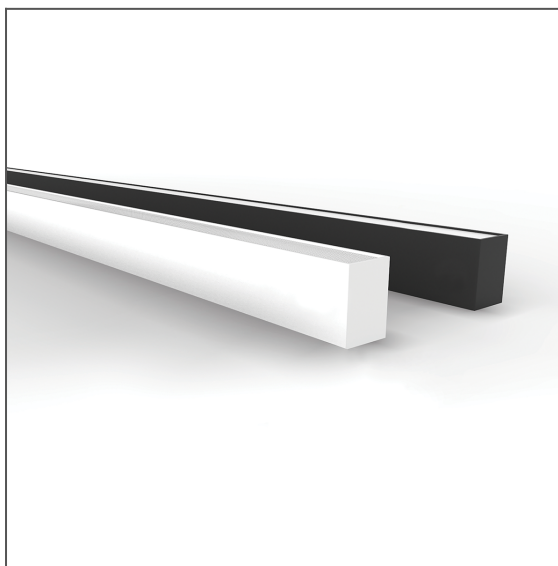
## 160 LINKS COLLECTION

SKU: I60-LINKS-COLLECTION

### PRODUCT IMAGES & DIMENSIONS



EXTR-5882-WH-1M



EXTR-5882-BK-1M

### SPECIFICATIONS

SKU	EXTR-5882-WH-1M	EXTR-5882-BK-1M
<b>Weight</b>	2.3	2.3
<b>IP rating</b>	20	20
<b>Trim colour</b>	White	Black
<b>Length</b>	1000 mm	1000 mm
<b>Width</b>	58 mm	58 mm
<b>Height</b>	82 mm	82 mm
<b>Mounting type</b>	Surface,Suspended	Surface,Suspended
<b>Diffuser</b>	Opal	Opal
<b>Weatherproof</b>	Non-weatherproof	Non-weatherproof
<b>Working temperature</b>	-20~45°C	-20~45°C
<b>Box Qty</b>	8	8