

## BLACK ALU PROFILE W INNER TRAY OPAL MATTE DIF 3M/PC

**VB-ALP5075-3M-BLK**

IP20

Vibe's Series of Aluminium Profiles use high quality 6063-T5 aircraft Aluminium and environmentally friendly PMMA (polymethyl methacrylate) or PC (polycarbonate) covers, producing an elegant appearance with excellent heat dissipation. Please note: Required end caps, mounting clips and LED Strip Lighting sold separately under code VB-ALP-ACC & VBLST.

### Features & Benefits

- Applicable Max Power: <44W/M
- Surface mounted extrusions are the perfect answer when the design doesn't allow or doesn't warrant a recessed profile & in many cases you will find a recessed profile has a surface mount "twin brother" in both size & shape.
- Suspended Extrusions look great over any kitchen bench, reception desk or bar top etc and make any retail shop display look stylish and modern.
- Prolong the life of your LED strip lights by dissipating the heat generated during operation
- Perfect for seamless continuous linear lighting
- Most (not all) are supplied in 1m, 2m & 3m lengths & can also be customised upon request.
- PC/PMMA Opal Diffuser • All available as standard Anodised Aluminium colour



\* Some models/sizes available in Black & White  
\*\* Custom colour also available on request

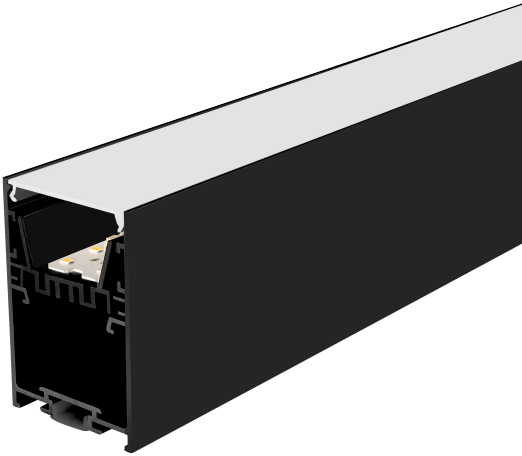
BLACK ALU PROFILE W INNER TRAY OPAL MATTE DIF 3M/PC

VB-ALP5075-3M-BLK

Specifications

SKU	VB-ALP5075-3M-BLK
EAN	9340994025568
IP rating	20
Trim colour	Black
Length	3000 mm
Width	50 mm
Height	75 mm
Mounting type	Surface, Suspended
Accessories	2x End Caps, Inner Clips, Metal Mounting Clip, Safety Cord, Black Diffuser, Blanking Plate, 90° Connector, 180° Connector, Suspension Kit
Weatherproof	Non-weatherproof

Photometric information available upon request.



Dimensional Drawings

